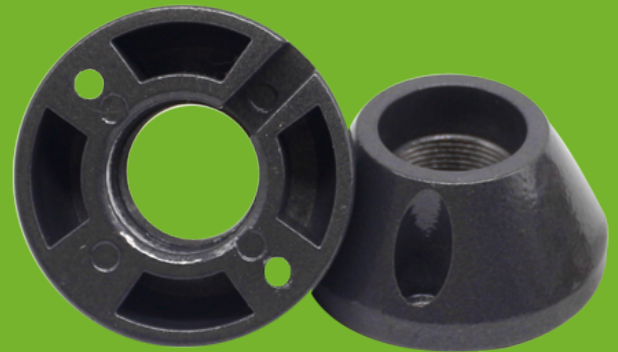


iButton EM 125KHz iButton Card Reader RFID Access Card Reader



iButton

Specifications

iButton RFID embedded reader is designed for using in the network and standalone access control systems. iButton embedded reader supports 125KHz or 13.56MHz keys and connects to the controllers via Wiegand-26/34 protocol.

Model No.	iButton EM	iButton MF
Purpose	ACS reader	
Operating frequency	125KHz	13.56 MHz
Key types	RFID (Proximity)	
Reader standard	TK4100	M1, Mifare Classic 1K, Mifare Classic 4K
Reader protocol	Wiegand-26, Wiegand-34	
RFID reading range (cm)	0-3	
Current consumption (mA)	35mA	
Visual indication	1 x Red LED	
External control of LEDs and buzzer	No	
Case material	Polyamide	

Dimensions

